

**Definition / Tanımlama**

PURINELAS HT 2000 series are solvent-free, hot-curing, TDI-polyether based, high performance, two-component liquid polyurethane elastomer systems. TDI-terminated prepolymers are processed using hot casting methods. PURINELAS HT 2000 systems provide PU elastomers with excellent properties. TDI based products are less sensitive to moisture, and are more user friendly.

**Application Area / Uygulama Yeri**

PURINELAS HT 2000 is suitable for all types of industrial and commercial applications such as;

- Oil and Gas
- Mining
- Construction
- Transportation
- Agriculture

**Advantages / Avantajlar**

- Solvent Resistant Oil
- Resistance Sliding Abrasion
- Resistance Excellent Mechanical
- Properties Resistance to Heat
- Aging Vibration Dampening
- Higher Split Tear Strength

**Resin Technical Properties / Reçine Teknik Özellikleri**

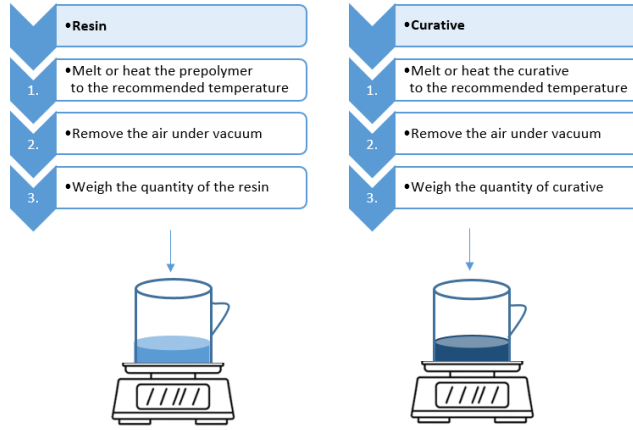
| Product            | % NCO  | Viscosity (100 °C) | Curative | Stoichiometry | Curative (per 100 Part Resin) | Pot Life (500g mix/min) |
|--------------------|--------|--------------------|----------|---------------|-------------------------------|-------------------------|
| PURINELAS HT 2083A | 3.00 % | 3000 cP            | MOCA     | 95 %          | 9.06                          | 25                      |
| PURINELAS HT 2090A | 4.00 % | 1800 cP            | MOCA     | 95 %          | 12.09                         | 10                      |
| PURINELAS HT 2095A | 4.75 % | 900 cP             | MOCA     | 95 %          | 14.3                          | 5                       |

**Final Product Technical Properties / Final Ürün Teknik Özellikleri**

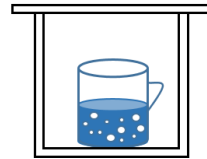
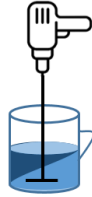
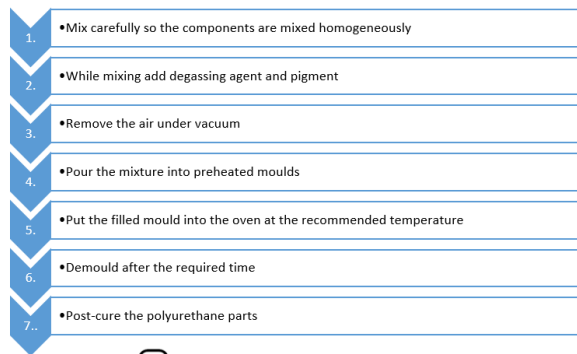
| Product            | Shore (A/D) | % 100 Modulus (Mpa) | % 300 Modulus (Mpa) | Tensile Strength (Mpa) | Elongation at Break (%) | Tear Strength (KN/m) | Abrasion Loss (mm <sup>3</sup> ) | Specific Gravity (gr/cm <sup>3</sup> ) |
|--------------------|-------------|---------------------|---------------------|------------------------|-------------------------|----------------------|----------------------------------|--|
| PURINELAS HT 2095A | 95A         | 12                  | 29                  | 45                     | 370                     | 120                  | 38                               | 1.13                                   |
| PURINELAS HT 2090A | 90A         | 8                   | 15                  | 38                     | 440                     | 110                  | 42                               | 1.1                                    |
| PURINELAS HT 2083A | 83A         | 5                   | 10                  | 35                     | 500                     | 95                   | 42                               | 1.08                                   |

**Preparation**

- Prepare the mould, apply release agent to the mould.
- Put the mould into the oven at the required temperature.



## Processing



## Cleaning / Temizlik

After the application, the equipment used must be cleaned with a suitable solvent.

## Packing / Paketleme

PURINELAS HT 2000 is supplied as 25kg or 200kg in metal buckets. Different packaging preferences can be designed according to the mixing ratio.

## Storage / Depolama

PURINELAS HT 2000 is stored in its packaging at a temperature of 5-30 oC without opening the cap, its shelf life is 12 months. Since the product reacts with moisture in the air, it is recommended to use the opened packages completely. It is recommended that the half packages you do not use, should be closed very well and if possible, nitrogen gas should be used in the closing process.

## Safety and Health / Güvenlik ve Sağlık

PURINELAS HT 2000 contains isocyanates. Since the product reacts in contact with water, avoid contact with your eyes. Therefore, gloves and goggles should definitely be used while working. Since it is solvent-free, it is not necessary to use any mask especially. If the product comes into contact with your skin, wash with plenty of water and soap. Dispose of the packages after use in accordance with the regulations.

**Note**

The information on this data sheet is based on our experiences and correct to the best of our knowledge. It is, however, not binding. It has to be adjusted to the individual structure, application purpose and especially to local conditions. Our data refers to the accepted engineering rules, which have to be observed during application. This provided we are liable for the correctness of this data within the scope of our terms and conditions of sale-delivery-and-service. Recommendations of our employees which differ from the data contained in our information sheets are only binding if given in written form. The accepted engineering rules must be observed at all times.

Bu teknik formdaki veriler kendi deneyimlerimiz ve bilgilerimiz referans alınarak hazırlanmıştır. Ancak bağlayıcılığı yoktur. Yapıya, uygulama amacına ve özellikle yerel koşullara göre ayarlanmalıdır. Verilerimiz, uygulama sırasında uyulması gereken mühendislik kurallarını referans almıştır. Satış teslim, hizmet şartlarımız ve koşullarımız kapsamında bu verilerin doğruluğundan sorumlu olmaktayız. Çalışanlarımızın bilgilendirme formlarımızdaki yer alan verilerden farklı önerileri ancak yazılı olarak verilmesi halinde bağlayıcıdır. Kabul edilen mühendislik kurallarına her zaman uyulmalıdır.

**Warnings**

- Since the material is based on polyurethane, it should be consumed after its package is opened. Otherwise, the surface of the material cures by reacting with the moisture in the air and forms a thick film layer.
- Contact of the product with water in the packaging should be avoided.
- Attention should be paid to the mixing ratio.

**PURIN®Aqua****PURIN®ATE****PURIN®COAT PURIN®ADHE PURIN®SEAL PURIN®ELAS**